

HOW TO ADJUST A VINYL FOUR PANEL SLIDING GLASS DOOR

Materials Required

#3 Phillips head
screwdriver

#2 Phillips head
screwdriver

Putty knife

Adjusting your Milgard® vinyl four panel sliding glass door helps it operate smoothly. Follow these instructions to adjust the locks and wheels on your door.

1. Begin by removing the four adjustment plugs located at the bottom of the door panels.



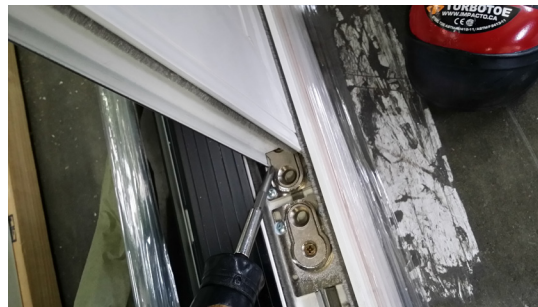
2. With the door slightly open, use a putty knife to raise the weight of the door panel off the rollers. This allows the adjustment screw to be turned without damaging the screw.

- It is important to have the weight off the rollers when adjusting.



3. Use a #2 Phillips head screwdriver to turn the adjustment screw, clockwise to raise the panel and counterclockwise to lower the panel.

4. Adjust the door panels as desired.



- Use the MM logo on each handle as a guide to ensure a good locking position.

Safety Precautions

This activity is appropriate for individuals with an understanding of how to use simple hand tools. Remember to wear eye protection and to make sure that pets and small children are not present when performing these activities.

For questions, please contact us:

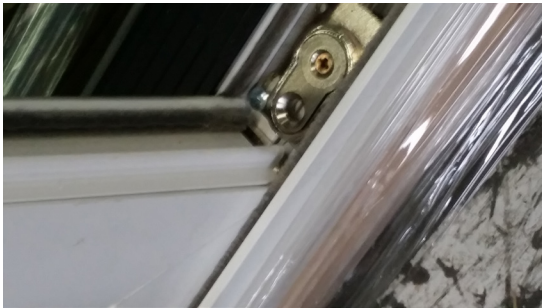
1.800.MILGARD

milgard.com

5. Next, locate the set screws on all 4 multi-point lock strikes, at the top and bottom of the door.



6. Remove the screws closest to the handle.
7. Now, slightly loosen the set screws closest to the center.
8. Starting with the passive panel, position the panel so it engages both the top and bottom strikes.



9. Once you achieve a good locking position, release the lock. Slide the panel open and tighten the screws on the passive side.
10. Test the operation and locks again before re-applying the two set screws.
11. Now, position the active panel and multi-point strikes into a good locking position.
12. Once you achieve a good locking position, tighten the two screws on the active side.
13. Test the operation of the locks on the active panel before installing the final two set screws on the multi-point lock strikes.
14. Finish by replacing the 4 adjustment plugs at the bottom of the panels.